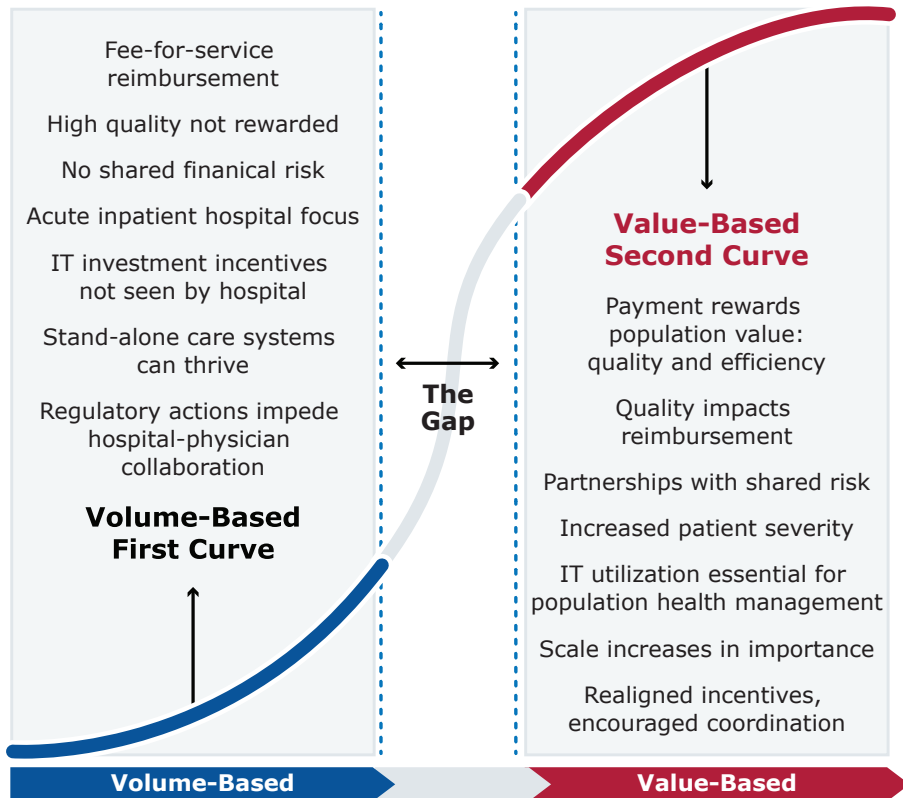


# SECOND CURVE OF HEALTH CARE

## VOLUME TO VALUE

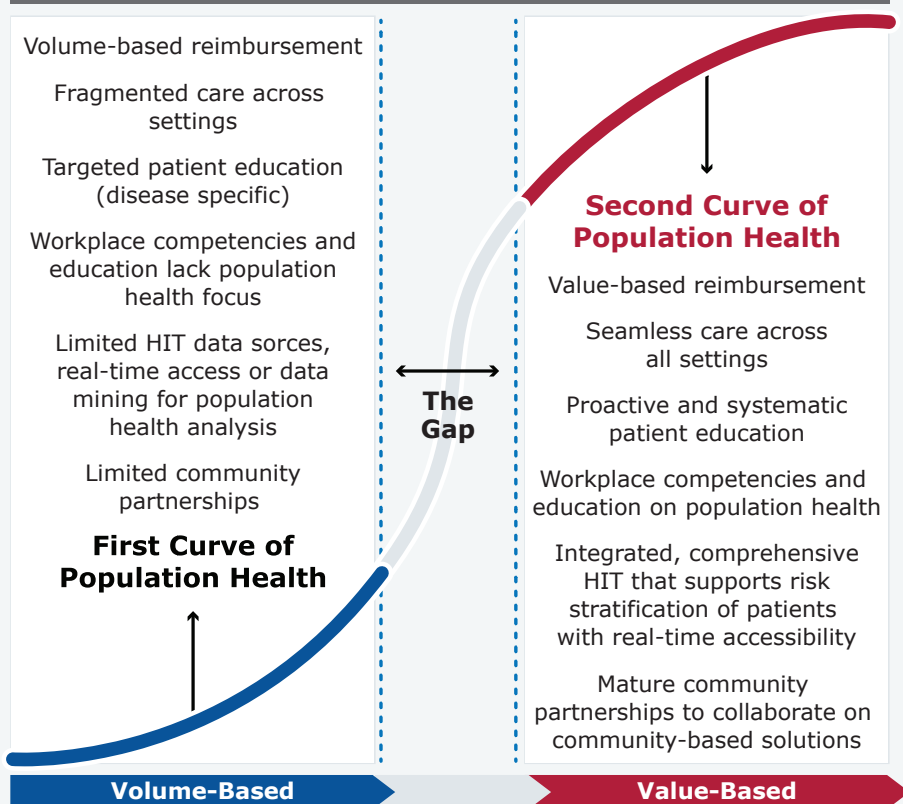


## MUST-DO STRATEGIES

**10 must-do strategies were identified for the hospital field to implement; however, the first 4 were identified as major priorities.**

- 1** Aligning hospitals, physicians, and other providers across the continuum of care
- 2** Utilizing evidenced-based practices to improve quality and patient safety
- 3** Improving efficiency through productivity and financial management
- 4** Developing integrated information systems
5. Joining and growing integrated provider networks and care systems
6. Educating and engaging employees and physicians to create leaders
7. Strengthening finances to facilitate reinvestment and innovation
8. Partnering with payers
9. Advancing an organization through scenario-based strategic, financial, and operational planning
10. Seeking population health improvement through pursuit of the "triple aim"

## POPULATION HEALTH



## SECOND CURVE OF POPULATION HEALTH

**These tactics are:**

- Value-based reimbursement
- Seamless care across all settings
- Proactive and systematic patient education
- Workplace competencies and education on population health
- Integrated, comprehensive HIT that supports risk stratification of patients with real-time accessibility
- Mature community partnerships to collaborate on community-based solutions